

EMPOWERING MARKET ACCESS TEAMS

With interactive, localised HEOR models, presentations and dashboards



EVIDENCE



VALUE & ACCESS



COMMUNICATION

We develop engaging, interactive value communication tools and unique innovations like our Connected Insights dashboards.

With economic modelling, medical writing and digital capabilities, our solutions are enhanced by authentic NHS insights.

Bespoke value communication tools

Our payer value toolkits allow field-based teams to concisely communicate the value and financial impact of adoption of your products.

These can include:

- Value proposition presentation
- Budget impact model
- Data visualisation
- Bespoke business case generation
- Tracking and monitoring of usage statistics

We can convert your existing materials or develop your tool from beginning to end.

Typically delivered via Veeva/iPad, our tools are interactive, engaging and flexible, allowing you to run different scenarios depending on the audience.



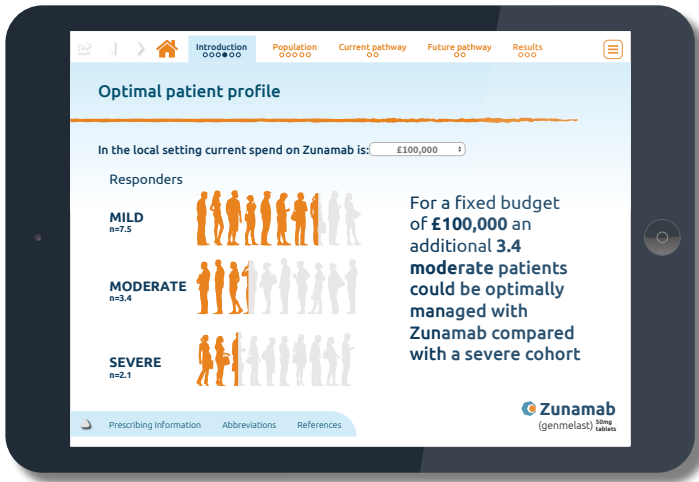
Visit our demo centre:
demo-centre.mtechaccess.co.uk

“Mtech Access did some innovative work with us on a first-in-industry payer evidence tool.... Not too many vendors can push the envelope in this way and I am not aware of other vendors who are working to make these dynamic tools Veeva compatible. It has had a massive positive impact with multi-country affiliates and has been received well by the NHS due to the unbiased presentation of evidence.”

Global HEOR Manager, Top 20 Pharma company



Localised interactive value propositions



We can enhance your product's value proposition with localised real-world data such as:

- Prescribing of your and competitor therapies
- Prevalence and incidence
- Healthcare resource use
- Disease management performance

Our localised value proposition tools combine impactful messaging with engaging design, and can be Veeva compatible.

Connected Insights

Strengthen relationships with healthcare decision makers by delivering valued insights that present a multi-dimensional view of the payer's environment.

With Connected Insights you can:

- Connect real-world evidence sources
- Build dashboards with clear storytelling and actionable insights
- Identify areas of unmet need and spot opportunities

Enabling you to:

- Prioritise areas with unmet needs relevant to your therapy
- Engage in evidence-led conversations with healthcare decision makers
- Illustrate need, enable change and develop partnerships

"This is singularly the most effective and interactive tool I have used in 24 years in pharma. Please extend my thanks to the development team."

Key Account Manager, Top 20 Pharma Company

